



www.ulitzer.com


[Home](#)
[Topics](#)
[Authors](#)
[Members](#)
[Write An Article](#)

News Feed Item

Comtrade Facilitates Global Access to CERN Research

New collaboration improves access to more than 140 petabytes of LHC data for thousands of researchers worldwide

BY PR NEWSWIRE

ARTICLE RATING:

Rate

NOVEMBER 19, 2015 10:00 AM EST

[RELATED](#)
[PRINT](#)
[EMAIL](#)
[FEEDBACK](#)
[+ ADD THIS](#)
[BLOG THIS](#)


LJUBLJANA, Slovenia, Nov. 19, 2015 /PRNewswire/ -- Comtrade, a leading provider of IT infrastructure management and monitoring solutions, has joined [CERN openlab](#) as an associate member. The collaboration will address the accessibility, manageability and scalability of the EOS storage system used by the [European Organization for Nuclear Research \(CERN\)](#). By improving EOS deployment, data access and management, Comtrade will enhance collaboration among the growing number of research organizations participating in the experiments on the world's most powerful particle accelerator – [the Large Hadron Collider \(LHC\)](#).

As part of CERN's mission to study the basic constituents of matter, the Organization stores and shares data with collaborating institutions around the globe. The CERN Data Centre collects more than 30 petabytes of data per year from the LHC experiments. CERN's EOS Large Scale Storage System is the keystone of the LHC data processing, with installations across two centers for a total 140 petabytes of installed disk space.

The amount of data produced by the LHC experiments is increasing dramatically, and the number of research organizations participating in these experiments is also growing. Consequently, CERN has a plan to productize the EOS system, in order to facilitate easy data access and use by external contributors. Due to its extensive expertise in storage, network and systems management, Comtrade was selected to enhance the EOS's capabilities.

"We have a tremendous amount of data that needs to be managed, and this is rapidly growing," said Alberto Di Meglio, head of CERN openlab. "We provide reliable access and support to the researchers collaborating in the experiments. Comtrade's expertise will be a huge asset in helping us to continue supporting our community in this manner, even as experimental collaborations grow and more data is produced."

To facilitate the research being conducted around the world with the LHC data, the EOS

Comments

New Release of Quest Toad for Oracle Offers Enhancements to Reduce Risk

By Liz McMillan

yourfanat wrote: I am using another tool for Oracle developers - dbForge Studio for Oracle. This IDE has lots of usefull features, among them: oracle designer, code competition and formatter, query builder, debugger, profiler, erxport/import, reports and many others. The latest version supports Oracle 12C. More information [here](#).

Oct. 22, 2013 02:57 AM EDT
[read more & respond »](#)

system will need to be deployed and managed in a straightforward manner, regardless of the amount of data and the complexity of the IT environment. The goal is to provide reliable and fast streaming storage to fulfill the experiments' unprecedented requirements for data processing, data distribution and user analysis.

As part of its support for the LHC research program, Comtrade has officially joined CERN openlab. CERN openlab is a unique public-private partnership that accelerates the development of cutting-edge solutions for the worldwide LHC community and wider scientific research. Through CERN openlab, CERN collaborates with leading ICT companies and research institutes.

"The important research that CERN enables around the globe depends on giving scientists fast, easy access to vast amounts of data 24/7," said Simon Taylor, senior vice president and general manager of System Software and Tools at Comtrade. "We are proud to be a member of CERN openlab, and we look forward to contributing our expertise and efforts in order to provide researchers with more efficient access and support to LHC data from CERN."

About Comtrade

Comtrade System Software and Tools is a leading provider of IT infrastructure management solutions specializing in data, system, network and application performance. Comtrade brings proven expertise to different industries through plug-ins for leading infrastructure management platforms, or through our advanced technology that enables vendors and IT professionals to focus on core business deliverables. With more than 1,000 software engineers on staff, Comtrade is one of Europe's largest IT solution providers and is partnered with many of the world's leading technology companies, including Microsoft, HP, Oracle, F5 and Citrix. For more information, visit www.comtradeproducts.com, or follow us on Twitter at [@mgmt_products](https://twitter.com/mgmt_products).



Logo - <http://photos.prnewswire.com/prnh/20151117/288489LOGO>

To view the original version on PR Newswire, visit:<http://www.prnewswire.com/news-releases/comtrade-facilitates-global-access-to-cern-research-300180584.html>

SOURCE Comtrade

Published November 19, 2015

Copyright © 2015 Ulitzer, Inc. — All Rights Reserved.

Syndicated stories and blog feeds, all rights reserved by the author.

[RELATED](#) [PRINT](#) [EMAIL](#) [FEEDBACK](#) [ADD THIS](#) [BLOG THIS](#)

More Stories By PR Newswire

Copyright © 2007 PR Newswire. All rights reserved. Republication or redistribution of PRNewswire content is expressly prohibited without the prior written consent of PRNewswire. PRNewswire shall not be liable for any errors or delays in the content, or for any actions taken in reliance thereon.

Top Stories

Cloud Computing



Computers and Software

[video] Cloud-Centric Data Management By @RDeMeno | @CloudExpo @Commvault #Cloud

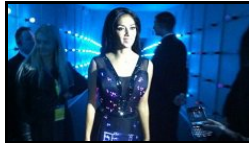
The Business of IoT | @ThingsExpo @EmbeddedExperts #IoT #BigData

IoT = Cloud + Big Data + Analytics | @ThingsExpo #Cloud #IoT #BigData

DevOps Helps with and Benefits from the IoT | @ThingsExpo #IoT #DevOps

Driving IoT from Hype to Reality | @ThingsExpo @PubNub #IoT #M2M #API

IoT



Computers and Software

Wearable Tech: Here to Stay? | @ThingsExpo #IoT #M2M #Wearables

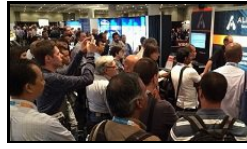
Ushering in the IoT | @ThingsExpo @Luxoft #IoT #BigData #InternetOfThings

Testing Challenges of IoT | @ThingsExpo #IoT #M2M #API #InternetOfThings

The IoT Is Getting Agile By @Flint_Brenton | @ThingsExpo #IoT #M2M #API

IoT in the Enterprise One Year Later | @ThingsExpo @Citrix #IoT #M2M #API

BigData



Computers and Software

How to Sponsor and Exhibit at 2016 @ThingsExpo | #IoT #M2M #BigData #InternetOfThings

Big Data Capability Model | @ThingsExpo #BigData #IoT #InternetOfThings

The World's Many IoTs 'Power Panel' at @ThingsExpo | #IoT #M2M #BigData

API World 'Power Panel' at @CloudExpo | #API #IoT #M2M #BigData

Sandy Carter Keynote at @CloudExpo | @Sandy_Carter @IBMcloud #IoT #M2M #InternetOfThings

Security Journal



Computers and Software

Secure Authentication for Public Wi-Fi | @CloudExpo #IoT #BigData

Gitrob on the Network | @ThingsExpo #BigData #IoT #M2M #Security

Cavirin to Exhibit at @CloudExpo | @Cavirin #IoT #DevOps #Microservices

Clouds Are Coming! | @CloudExpo @ZertoCorp #IoT #M2M #API #BigData

Guide: Protect Your Cloud Apps | @CloudExpo @CloudRaxak #Microservices

DevOps



Computers and Software

Kiba Analytics | @CloudExpo @Lo... #Microservices

Leap Success | @G2G...

Con... and IoT | #M2M...

28 | @Clou... #Conti...

Beh... DevOp... #DevO...

CLOUD EXPO

JUNE 7-9, 2016

JAVITS CENTER
New York City, NY

NOVEMBER 1-3, 2016

SANTA CLARA CONVENTION CENTER
Santa Clara, CA

Cloud Expo

- [Home](#)
- [Register](#)
- [Keynotes](#)
- [Speakers](#)
- [Sessions](#)
- [Schedule](#)
- [Exhibitors](#)
- [Sponsorship Info](#)
- [Conference Info](#)
- [Hotel Info](#)
- [Press Registration](#)
- [Call For Papers](#)
- [Media Sponsors](#)
- [Advisory Board](#)

Cloud Computing & All That It Touches In One Location Cloud Computing - Big Data - Internet of Things SDDC - WebRTC - DevOps

Cloud computing is become a norm within enterprise IT.

The competition among public cloud providers is red hot, private cloud continues to grab increasing shares of IT budgets, and hybrid cloud strategies are beginning to conquer the enterprise IT world.

Big Data is driving dramatic leaps in resource requirements and capabilities, and now the Internet of Things promises an exponential leap in the size of the Internet and Worldwide Web.

The world of SDX now encompasses Software-Defined Data Centers (SDDCs) as the technology world prepares for the Zettabyte Age.

Add the key topics of WebRTC and DevOps into the mix, and you have three days of pure cloud computing that you simply cannot miss.

Delegates will leave Cloud Expo with dramatically increased understanding the entire scope of the entire cloud computing spectrum from storage to security.

Cloud Expo - the world's most established event - offers a vast selection of 130+ technical and strategic Industry Keynote General Sessions, Breakout Sessions, and signature Power Panels. The exhibition floor features 100+ exhibitors offering specific solutions and comprehensive strategies. The floor also features two Demo Theaters that give delegates the opportunity to get even closer to the technology they want to see and the people who offer it.

Attend Cloud Expo. Craft your own custom experience. Learn the latest from the world's best technologists. Find the vendors you want and put them to the test.

See you in New York!



[Terms of Use & Our Privacy Statement - About Newsfeeds / Videofeeds](#). Copyright ©1994-2014 Ulitzer, Inc. All Rights Reserved. All marks are trademarks of Ulitzer, Inc.

Reproduction in whole or in part in any form or medium without express written permission of Ulitzer, Inc. is prohibited.